

# Kings Langley School



## Child Protection Policy

ANNUAL REVIEW  
REVIEW DATE: July 2017  
(Updated September 2016)

# CHILD PROTECTION POLICY

## Kings Langley School

### Policy Review

This policy will be reviewed in full by the Governing Body on an annual basis.

The policy was last reviewed and agreed by the Governing Body on 4<sup>th</sup> July 2016.

It is due for review on July 2017 (up to 12 months from the above date).

Signature .....

Date .....

Head Teacher

Signature .....

Date .....

Chair of Governors

## CONTENTS

<b>1</b>	<b>Introduction</b>
<b>2</b>	<b>Statutory Framework</b>
<b>3</b>	<b>The Designated Senior Person</b>
<b>4</b>	<b>The Governing Body</b>
<b>5</b>	<b>School Procedures</b>
<b>6</b>	<b>When to be Concerned</b>
<b>7</b>	<b>Dealing with a Disclosure</b>
<b>8</b>	<b>Confidentiality</b>
<b>9</b>	<b>Communication with Parents</b>
<b>10</b>	<b>Record Keeping</b>
<b>11</b>	<b>Allegations Involving School Staff/Volunteers</b>
<b>Appendix 1</b>	<b>Link to Keeping Children Safe in Education (DfE, 2016)</b> <b>Part One: Information for all school and college staff and</b> <b>Annex A :Further information</b>

<b>Appendix 2</b>	<b>Declaration for staff: Child Protection Policy and Keeping Children Safe in Education (DfE, 2016)</b>
<b>Appendix 3</b>	<b>What to do if you're worried a child is being abused: advice for practitioners flowchart (DfE 2015)</b>
<b>Appendix 4</b>	<b>Indicators of abuse and neglect</b>
<b>Appendix 5</b>	<b>The School Prospectus</b>
<b>Appendix 6</b>	<b>Information Sharing</b>
<b>Appendix 7</b>	<b>Addendum to Policy</b>

## 1. RATIONALE

This policy exists to provide a framework for supporting our stated aim of “ensuring the happiness of every individual in our community”, to promote a climate which enables all students to flourish, regardless of ability or special needs, and supports our desired outcomes of developing "strong character".

In addition, in the application of this policy, Kings Langley School will strive to reflect the school aims to ensure that members of our community develop resilience, grit and self-reliance as this helps them remain safe and secure in a range of challenging circumstances. The school follows the procedures established by the Hertfordshire Safeguarding Children Board: a guide to procedure and practice for all professional staff in Hertfordshire who work with children.

Commitment to Equality and Diversity - This school is founded on a set of fundamental values designed to enable all students and adults connected with our community to flourish and succeed, regardless of background or circumstances. We are determined to be open to people, places, methods and ideas—and as such, equality and diversity are at the heart of everything we do. Our continued dedication to social justice and equality of opportunity is embodied in everything we do.

We are creating an **inclusive** school community where:

- People are treated with dignity and respect
- Inequalities are challenged
- We anticipate, and respond positively to, different needs and circumstances so that everyone can achieve their potential
- We value diversity and we recognise that different people bring different perspectives, ideas, knowledge and culture, and that this difference brings great strength.
- We believe that discrimination or exclusion based on individual characteristics and circumstances, such as age; disability; caring or dependency responsibilities; gender or gender identity; marriage and civil partnership status; political opinion; pregnancy and maternity; race, colour, caste, nationality, ethnic or national origin; religion or belief; sexual orientation; socio-economic background; trade union membership status or other distinctions, represents a waste of talent and a denial of opportunity for self-fulfilment.
- We recognise that patterns of under achievement at any level and differences in outcomes can be challenged through positive intervention activities designed to bridge gaps.
- We respect the rights of individuals, including the right to hold different views and beliefs. We will not allow these differences to be manifested in a way that is hostile or degrading to others.
- We expect commitment and involvement from all our staff, students, partners and providers of goods and services in working towards the achievement of our vision.

## INTRODUCTION

Safeguarding is defined as protecting children from maltreatment, preventing impairment of health and/or development, ensuring that children grow up in the provision of safe and effective care and optimising children's life chances.

This Child Protection Policy forms part of a suite of documents and policies which relate to the safeguarding responsibilities of Kings Langley School.

In particular this policy should be read in conjunction with the Safer Recruitment Policy, Behaviour Policy, Code of Conduct for Staff, Physical Intervention Policy, Anti-Bullying Policy, E-safety Policy, Mobile Phone Usage Policy and ICT Acceptable Usage Policy.

### **Purpose of a Child Protection Policy**

To inform staff, parents, volunteers and governors about the school's responsibilities for safeguarding children.  
To enable everyone to have a clear understanding of how these responsibilities should be carried out.

### **Hertfordshire Safeguarding Children Board Inter-agency Child Protection and Safeguarding Children Procedures**

The school follows the procedures established by the Hertfordshire Safeguarding Children Board; a guide to procedure and practice for all agencies in Hertfordshire working with children and their families.

[www.hertssafeguarding.org.uk](http://www.hertssafeguarding.org.uk)

### **School Staff & Volunteers**

All school and college staff have a responsibility to provide a safe environment in which children can learn.

School staff and volunteers are particularly well placed to observe outward signs of abuse, changes in behaviour and failure to develop because they have daily contact with children.

All school staff and volunteers will receive appropriate safeguarding children training, so that they are knowledgeable and aware of their role in the early recognition of the indicators of abuse or neglect and of the appropriate procedures to follow. This training is refreshed every three years. In addition all staff members should receive safeguarding and child protection updates (for example, via email, e-bulletins and staff meetings), as required, but at least annually, to provide them with relevant skills and knowledge to safeguard children effectively.

Temporary staff and volunteers will be made aware of the safeguarding policies and procedures by the Designated Senior Person - including Child Protection Policy and staff behaviour policy (code of conduct)

## **Mission Statement**

Establish and maintain an environment where children feel secure, are encouraged to talk, and are listened to when they have a worry or concern.

Establish and maintain an environment where school staff and volunteers feel safe, are encouraged to talk and are listened to when they have concerns about the safety and well-being of a child.

Ensure children know that there are adults in the school whom they can approach if they are worried.

Ensure that children, who have additional/unmet needs are supported appropriately. This could include referral to early help services or specialist services if they are a child in need or have been/are at risk of being abused and neglected.

Ensure that children who have been abused will be supported in line with a child protection plan, where deemed necessary.

Consider how children may be taught about safeguarding, including online, through teaching and learning opportunities, as part of providing a broad and balanced curriculum. Include opportunities in the PSHE curriculum for children to develop the skills they need to recognise and stay safe from abuse.

Contribute to the five outcomes which are key to children's wellbeing:

- be healthy
- stay safe (by developing strong character traits)
- enjoy and achieve
- make a positive contribution
- achieve economic wellbeing

Staff members working with children are advised to maintain an attitude of 'it could happen here' where safeguarding is concerned. When concerned about the welfare of a child, staff members should always act in the interests of the child.

## **Implementation, Monitoring and Review of the Child Protection Policy**

The policy will be reviewed annually by the governing body. It will be implemented through the school's induction and training programme, and as part of day to day practice. Compliance with the policy will be monitored by the Designated Senior Person and through staff performance measures.

## 2. STATUTORY FRAMEWORK

In order to safeguard and promote the welfare of children, Kings Langley School will act in accordance with the following legislation and guidance:

- The Children Act 1989
- The Children Act 2004
- Education Act 2002(section 175/157)  
Outlines that Local Authorities and School Governing Bodies have a responsibility to “ensure that their functions relating to the conduct of school are exercised with a view to safeguarding and promoting the welfare of children who are its pupils”.
- Hertfordshire Safeguarding Children Board Inter-agency Child Protection and Safeguarding Children Procedures (Electronic)
- Keeping Children Safe in Education (DfE September 2016)
- Keeping Children Safe in Education: Part One - information for all school and college staff (DfE September 2016) – APPENDIX 1
- Safeguarding Children and Safer Recruitment in Education (DfES 2006)
- Working Together to Safeguard Children (DfE 2015)
- The Education (Pupil Information) (England) Regulations 2005
- Dealing with Allegations of Abuse Against Teachers and Other Staff (DfE 2011)
- Sexual Offences Act (2003)
- Section 26, The Counter Terrorism and Security Act 2015 (PREVENT duty)
- Female Genital Mutilation Act 2003 (Section 74 ,Serious Crime Act 2015)
- Information sharing: Advice for practitioners providing safeguarding services to children, young people, parents and carers (DfE March 2015)

Working Together to Safeguard Children (DfE 2015) requires all schools to follow the procedures for protecting children from abuse which are established by the Hertfordshire Safeguarding Children Board.

Schools are also expected to ensure that they have appropriate procedures in place for responding to situations in which:

- (a) a child may have been abused or neglected or is at risk of abuse or neglect
- (b) a member of staff has behaved in a way that has, or may have harmed a child or that indicates they would pose a risk of harm.

The school will also follow guidance in relation the specific safeguarding issues outlined in Appendix 2. This will include the Prevent Duty Guidance 2015, in the exercise of their functions, to have due regard to the need to prevent people from being drawn into terrorism. Furthermore Section 5B of the Female Genital Mutilation Act 2003 (as inserted by section 74 of the Serious Crime Act 2015) will place a statutory duty upon teachers, along with social workers and healthcare professionals, to report to the police where they discover (either through disclosure by the victim or visual evidence) that FGM appears to have been carried out on a girl under 18. It will be rare for teachers to see visual evidence, and they should not be examining pupils, but the same definition of what is meant by “to discover that an act of FGM appears to have been carried out” is used for all professionals to whom this mandatory reporting duty applies.



Furthermore:

Keeping Children Safe in Education (DfE 2015) places the following responsibilities on all schools:

- Schools should be aware of and follow the procedures established by the Hertfordshire Safeguarding Children Board
- Staff should be alert to signs of abuse and know to whom they should report any concerns or suspicions
- Schools should have procedures (of which all staff are aware) for handling suspected cases of abuse of pupils, including procedures to be followed if a member of staff is accused of abuse, or suspected of abuse
- A Designated Senior Person (referred to in 'Keeping Children Safe in Education (DfE 2015) as Designated Safeguarding Lead') should have responsibility for co-ordinating action within the school and liaising with other agencies
- Staff with the designated safeguarding lead should undergo updated child protection training every two years

Keeping Children Safe in Education (DfE 2015) also states:

**Governing bodies and proprietors should ensure there is an effective child protection policy in place together with a staff behaviour policy (code of conduct). Both should be provided to all staff – including temporary staff and volunteers – on induction. The child protection policy should describe procedures which are in accordance with government guidance and refer to locally agreed inter-agency procedures put in place by the LSCB, be updated annually, and be available publicly either via the school or college website or by other means.**

Safeguarding Children and Safer Recruitment in Education (DfES 2006) also states:

**“All parents need to understand that schools and FE colleges have a duty to safeguard and promote the welfare of children who are their pupils or students, that this responsibility necessitates a child protection policy and procedures, and that a school or FE college may need to share information and work in partnership with other agencies when there are concerns about a child’s welfare.”**

### **3. THE DESIGNATED SENIOR PERSON (referred to in 'Keeping Children Safe in Education (DfE 2015) as Designated Safeguarding Lead')**

Governing bodies and proprietors should ensure that the school or college designates an appropriate senior member of staff to take lead responsibility for child protection. This person should have the status and authority within the school to carry out the duties of the post including committing resources and, where appropriate, supporting and directing other staff.

During term time the designated safeguarding lead and or a deputy will always be available (during school or college hours) for staff in the school or college to discuss any safeguarding concerns. Out of hours/out of term activities are supported by Emergency Contacts who are frequently one of the DSPs. However, if the DSPs are not one of the Emergency Contacts, the Emergency Contact will be able to contact one of the DSPs on a rota basis out of hours to provide support for staff.

The Designated Senior Person for Child Protection in Kings Langley School is:

NAME: Helen Pocklington

A Deputy DSP should be appointed to act in the absence/unavailability of the DSP.

There are three Deputy Designated Senior Persons for Child Protection in Kings Langley School, and they are:

NAME: Rosemary Inskipp

NAME: Jun Shaw

NAME: Linda Patterson

**The broad areas of responsibility for the designated safeguarding lead are:**

#### **Managing referrals and cases**

- Refer all cases of suspected abuse or neglect to the Local Authority Children's Services (Safeguarding and Specialist Services), Police (cases where a crime may have been committed) and to the Channel programme where there is a radicalisation concern.
- Liaise with the Head Teacher or principal to inform him or her of issues especially ongoing enquiries under section 47 of the Children Act 1989 and police investigations
- Act as a source of support, advice and expertise to staff on matters of safety and safeguarding and when deciding whether to make a referral by liaising with relevant agencies
- Support staff who make referrals
- Share information with appropriate staff in relation to a child's looked after (CLA) legal status (whether they are looked after under voluntary arrangements with consent of parents or on an Interim Care Order or Care Order) and contact arrangements with birth parents or those with parental responsibility.
- Ensure they have details of the CLA's social worker and the name of the virtual school Head Teacher in the authority that looks after the child.

## **Training**

The Designated Senior Person should undergo formal training every two years. The DSP should also undertake Prevent awareness training in addition to this training, their knowledge and skills should be refreshed (for example via e-bulletins, meeting other DSPs, or taking time to read and digest safeguarding developments) at least annually to:

- Understand the assessment process for providing early help and intervention, for example through locally agreed common and shared assessment processes such as early help assessments
- Have a working knowledge of how local authorities conduct a child protection case conference and a child protection review conference and be able to attend and contribute to these effectively when required to do so
- Ensure each member of staff has access to and understands the school's or college's child protection policy and procedures, especially new and part time staff
- Be alert to the specific needs of children in need and those with special educational needs and young carers.
- Understand and support the school or college with regards to the requirements of the Prevent duty and are able to provide advice and support to staff on protecting children from the risk of radicalisation
- Be able to keep detailed, accurate, secure written records of concerns and referrals
- Obtain access to resources and attend any relevant or refresher training courses
- Encourage a culture of listening to children and taking account of their wishes and feelings, among all staff, in any measures the school or college may put in place to protect them

## **Raising Awareness**

- The designated safeguarding lead should ensure the school or college's policies are known and used appropriately:
- Ensure the school or college's child protection policy is reviewed annually and the procedures and implementation are updated and reviewed regularly, and work with governing bodies or proprietors regarding this

- Ensure the child protection policy is available publicly and parents are aware of the fact that referrals about suspected abuse or neglect may be made and the role of the school or college in this
- Link with the local LSCB to make sure staff are aware of training opportunities and the latest local policies on safeguarding
- Where children leave the school or college ensure their child protection file is transferred to the new school or college as soon as possible. This should be transferred separately from the main pupil file, ensuring secure transit and confirmation of receipt should be obtained.
- Schools should obtain proof that the new school/education setting has received the safeguarding file for any child transferring and then destroy any information held on the child in line with data protection guidelines.
- Ensure that staff have training that gives them the knowledge and confidence to identify children at risk of being drawn into terrorism, and to challenge extremist ideas which can be used to legitimise terrorism and are shared by terrorist groups. All staff should know where and how to refer children for further help, which could include Channel or Children's Social Care, for example.

#### **4. THE GOVERNING BODY**

Governing bodies and proprietors must ensure that they comply with their duties under legislation. They must also have regard to this guidance to ensure that the policies, procedures and training in their schools or colleges are effective and comply with the law at all times.

The nominated governor for child protection at Kings Langley School is:

NAME: Karol Babington

The responsibilities placed on governing bodies and proprietors include:

- their contribution to inter-agency working, which includes providing a coordinated offer of early help when additional needs of children are identified
- ensuring that an effective child protection policy is in place, together with a staff behaviour policy
- ensuring staff are provided with Part One of Keeping Children Safe in Education (DfE 2016) – Appendix 1 and are aware of specific safeguarding issues
- ensuring that staff induction is in place with regards to child protection and safeguarding

- appointing an appropriate senior member of staff to act as the Lead Designated Senior Person. It is a matter for individual schools and colleges as to whether they choose to have one or more Deputy Designated Senior Person.
- ensuring that all of the Designated Senior Persons (including deputies) should undergo formal child protection training every two years (in line with LCSB guidance) and receive regular (annual) safeguarding refreshers (for example via e-bulletins, meeting other DSPs, or taking time to read and digest safeguarding developments).
- prioritising the welfare of children and young people and creating a culture where staff are confident to challenge senior leaders over any safeguarding concerns
- ensuring that children are taught about safeguarding in an age appropriate way
- ensuring appropriate filters and appropriate monitoring systems are in place to safeguard children from potentially harmful and inappropriate online material. Additional information to support governing bodies and proprietors is provided in Annex C of Keeping Children Safe in Education(DFE 2016)- available at [http://www.thegrid.org.uk/info/welfare/child\\_protection/policy/national.shtml](http://www.thegrid.org.uk/info/welfare/child_protection/policy/national.shtml)
- having a senior leadership level lead to take leadership responsibility for the organisation's safeguarding arrangements
- ensuring safer recruitment procedures are in place.
- that due regard is placed on the need to prevent people from being drawn into terrorism. Being drawn into terrorism includes not just violent extremism but also non-violent extremism, which can create an atmosphere conducive to terrorism and can popularise views which terrorists exploit.
- relevant safeguarding children training for school staff/volunteers is monitored and attended
- safe management of allegations
- deficiencies or weaknesses in safeguarding arrangements are remedied without delay
- a member of the Governing Body (usually the Chair) is nominated to liaise with the local authority and/or partner agencies on issues of child protection and to be responsible in the event of an allegation of abuse being made against the Head Teacher
- safeguarding policies and procedures are reviewed annually and information provided to the local authority about them and about how the above duties have been discharged

## 5. KINGS LANGLEY SCHOOL PROCEDURES - STAFF RESPONSIBILITIES

Please see Appendix 3: What to do if you are worried a child is being abused: flowchart.

If any member of staff is concerned about a child he or she must inform the Designated Senior Person.

The Designated Senior Person will decide whether the concerns should be referred to Children's Services: Safeguarding and Specialist Services. If it is decided to make a referral to Children's Services: Safeguarding and Specialist Services this will be discussed with the parents, unless to do so would place the child at further risk of harm.

While it is the DSPs role to make referrals, any staff member can make a referral to Children's Services. If a child is in immediate danger or is at risk of harm (e.g. concern that a family might have plans to carry out FGM), a referral should be made to Children's Services and/or the Police immediately. Where referrals are not made by the DSP, the DSP should be informed as soon as possible.

If a teacher ( persons employed or engaged to carry out teaching work at schools and other institutions in England) , in the course of their work in the profession, discovers that an act of Female Genital Mutilation (FGM) appears to have been carried out on a girl under the age of 18 the teacher must report this to the police. This is a mandatory reporting duty. See Appendix 1- Keeping Children Safe in Education (DfE 2016): Annex A for further details.

If the allegations raised are against other children, the school should follow section 4.3 of the Hertfordshire Safeguarding Children Board Procedures Manual – Children Who Abuse Others. Please see the school's anti-bullying policy for more details on procedures to minimise the risk of peer on peer abuse.

The member of staff must record information regarding the concerns on the same day. The recording must be a clear, precise, factual account of the observations.

Particular attention will be paid to the attendance and development of any child about whom the school has concerns, or who has been identified as being the subject of a child protection plan and a written record will be kept.

If a pupil who is/or has been the subject of a child protection plan changes school, the Designated Senior Person will inform the social worker responsible for the case and transfer the appropriate records to the Designated Senior Person at the receiving school, in a secure manner, and separate from the child's academic file.

The Designated Senior Person is responsible for making the senior leadership team aware of trends in behaviour that may affect pupil welfare. If necessary, training will be arranged.

As a person who works with children, staff have a duty to refer safeguarding concerns to the designated senior person for child protection. However if:

- concerns are not taken seriously an organisation or
- action to safeguard the child is not taken by professionals and
- the child is considered to be at continuing risk of harm

Then Staff should speak to a DSP in their school or contact Hertfordshire Children's Services (including out of hours) on 0300 1234043.

If, at any point, there is a risk of immediate serious harm to a child a referral should be made to children's social care immediately. Anybody can make a referral. If the child's situation does not appear to be improving the staff member with concerns should press for re-consideration. Concerns should always lead to help for the child at some point.

## **6. WHEN TO BE CONCERNED**

Kings Langley School has a child centred and coordinated approach to safeguarding:

Safeguarding and promoting the welfare of children is everyone's responsibility. In order to fulfil this responsibility effectively, all professionals should make sure their approach is child centred. This means that they should consider, at all times, what is in the best interests of the child.

Schools and colleges and their staff form part of the wider safeguarding system for children. This system is based on the principle of providing help for families to stay together where it is safe for the children to do so, and looking at alternatives where it is not, whilst acting in the best interests of the child at all times.

Children who may require early help:

Families First is Hertfordshire's programme of early help services for families. A directory of early help services is available at [www.hertfordshire.gov.uk/familiesfirst](http://www.hertfordshire.gov.uk/familiesfirst) and will help practitioners and families find information and support to prevent escalation of needs and crisis.

All staff should be aware of the early help process, and understand their role in identifying emerging problems, sharing information with other professionals to support early identification and assessment of a child's needs. It is important for children to receive the right help at the right time to address risks and prevent issues escalating. This also includes staff monitoring the situation and feeding back to the Designated Senior Person any ongoing/escalating concerns so that consideration can be given to a referral to Children's Services (Safeguarding and Specialist Services) if the child's situation doesn't appear to be improving.

All Staff and volunteers at Kings Langley School should be alert to the potential need for early help for children also who are more vulnerable. For example:

- Children with a disability and/or specific additional needs.
- Children with special educational needs.
- Children who are acting as a young carer.
- Children who are showing signs of engaging in anti-social or criminal behaviour.

- Children whose family circumstances present challenges, such as substance abuse, adult mental health or learning disability, domestic violence
- Children who are showing early signs of abuse and/or neglect.

All staff and volunteers at Kings Langley School should be aware that the main categories of abuse are:

- Physical abuse
- Emotional abuse
- Sexual abuse
- Neglect

All staff and volunteers should be concerned about a child if he/she presents with indicators of possible significant harm – **see Appendix 3 for details.**

Generally, in an abusive relationship the child may:

- Appear frightened of the parent/s or other household members e.g. siblings or others outside of the home
- Act in a way that is inappropriate to her/his age and development (full account needs to be taken of different patterns of development and different ethnic groups)
- Display insufficient sense of ‘boundaries’, lack stranger awareness
- Appear wary of adults and display ‘frozen watchfulness’

### **Children with special educational needs and disabilities:**

Additional barriers can exist when recognising abuse and neglect in this group of children. This can include:

- Assumptions that indicators of possible abuse such as behaviour, mood and injury relate to the child’s impairment without further exploration;
- Assumptions that children with SEN and disabilities can be disproportionately impacted by things like bullying- without outwardly showing any signs;
- Communication barriers and difficulties
- Reluctance to challenge carers , (professionals may over empathise with carers because of the perceived stress of caring for a disabled child)



- Disabled children often rely on a wide network of carers to meet their basic needs and therefore the potential risk of exposure to abusive behaviour can be increased.
- A disabled child's understanding of abuse.
- Lack of choice/participation
- Isolation

### **Peer on peer abuse:**

Education settings are an important part of the inter-agency framework not only in terms of evaluating and referring concerns to Children's Services and the Police, but also in the assessment and management of risk that the child or young person may pose to themselves and others in the education setting.

If one child or young person causes harm to another, this should not necessarily be dealt with as abuse. When considering whether behaviour is abusive, it is important to consider:

- Whether there is a large difference in power (for example age, size, ability, development) between the young people concerned; or
- Whether the perpetrator has repeatedly tried to harm one or more other children; or
- Whether there are concerns about the intention of the alleged perpetrator.

Peer on peer abuse can manifest itself in many ways and different gender issues can be prevalent. Severe harm may be caused to children by abusive and bullying behaviour of other children, which may be physical, sexual or emotional and can include gender based violence/sexual assaults, sexting, teenage relationship abuse, peer-on-peer exploitation, serious youth violence, sexual bullying or harmful sexual behaviour.

Hertfordshire County Council recommends that education settings use 'The Sexual Behaviours Traffic Light Tool' by the Brook Advisory Service to help professionals; assess and respond appropriately to sexualised behaviour. The traffic light tool can be found at [www.brook.org.uk/our-work/the-sexual-behaviours-traffic-light-tool](http://www.brook.org.uk/our-work/the-sexual-behaviours-traffic-light-tool).

Guidance on responding to and managing sexting incidents can be found at [http://www.thegrid.org.uk/info/welfare/child\\_protection/reference/index.shtml#sex](http://www.thegrid.org.uk/info/welfare/child_protection/reference/index.shtml#sex)

## **7. DEALING WITH A DISCLOSURE**

If a child discloses that he or she has been abused in some way, the member of staff / volunteer should:

- Listen to what is being said without displaying shock or disbelief

- Accept what is being said
- Allow the child to talk freely
- Reassure the child, but not make promises which it might not be possible to keep
- Never promise a child that they will not tell anyone - as this may ultimately not be in the best interests of the child.
- Reassure him or her that what has happened is not his or her fault
- Stress that it was the right thing to tell
- Listen, only asking questions when necessary to clarify
- Not criticise the alleged perpetrator
- Explain what has to be done next and who has to be told
- Make a written record (see Record Keeping)
- Pass the information to the Designated Senior Person without delay

### **Support**

Dealing with a disclosure from a child, and safeguarding issues can be stressful. The member of staff/volunteer should, therefore, consider seeking support for him/herself and discuss this with the Designated Senior Person.

If a school /college staff member receives a disclosure about potential harm caused by another staff member, they should see section 11 of this policy– Allegations involving school staff/volunteers.

### **8. RECORD KEEPING**

All concerns, discussions and decisions made and the reasons for those decisions should be recorded in writing. If in doubt about recording requirements staff should discuss this with the designated safeguarding lead.

When a child has made a disclosure, the member of staff/volunteer should:

- Record as soon as possible after the conversation. Use the school record of concern sheet wherever possible.
- Do not destroy the original notes in case they are needed by a court

- Record the date, time, place and any noticeable non-verbal behaviour and the words used by the child
- Draw a diagram to indicate the position of any injuries
- Record statements and observations rather than interpretations or assumptions

All records need to be given to the Designated Senior Person promptly. No copies should be retained by the member of staff or volunteer.

The Designated Senior Person will ensure that all safeguarding records are managed in accordance with the Education (Pupil Information) (England) Regulations 2005.

If a pupil who is/ or has been the subject of a child protection plan changes school, the Designated Senior Person will inform the social worker responsible for the case and transfer the appropriate records to the Designated Senior Person at the receiving school, in a secure manner, and separate from the child's academic file.

## **9. CONFIDENTIALITY**

Safeguarding children raises issues of confidentiality that must be clearly understood by all staff/volunteers at Kings Langley School.

- All staff in schools, both teaching and non-teaching staff, have a responsibility to share relevant information about the protection of children with other professionals, particularly the investigative agencies (Children's Services: Safeguarding and Specialist Services and the Police).
- If a child confides in a member of staff/volunteer and requests that the information is kept secret, it is important that the member of staff/volunteer tell the child in a manner appropriate to the child's age/stage of development that they cannot promise complete confidentiality – instead they must explain that they may need to pass information to other professionals to help keep the child or other children safe.
- Staff/volunteers who receive information about children and their families in the course of their work should share that information only within appropriate professional contexts.

## **10. COMMUNICATION WITH PARENTS**

Kings Langley School will:

Ensure the child protection policy is available publicly either via the school or college website or by other means.

Parents should be informed prior to referral, unless it is considered to do so might place the child at increased risk of significant harm by:

- The behavioural response it prompts e.g. a child being subjected to abuse, maltreatment or threats / forced to remain silent if alleged abuser informed;
- Leading to an unreasonable delay;
- Leading to the risk of loss of evidential material;
- Placing a member of staff from any agency at risk.

Ensure that parents have an understanding of the responsibilities placed on the school and staff for safeguarding children. (Appendix 4: Information Sharing)

## **11. ALLEGATIONS INVOLVING SCHOOL STAFF/VOLUNTEERS**

An allegation is any information which indicates that a member of staff/volunteer may have:

- Behaved in a way that has, or may have harmed a child
- Possibly committed a criminal offence against/related to a child
- Behaved towards a child or children in a way which indicates s/he would pose a risk of harm if they work regularly or closely with children

This applies to any child the member of staff/volunteer has contact within their personal, professional or community life.

All staff and volunteers should feel able to raise concerns about poor or unsafe practice and potential failures in the school or education setting's safeguarding arrangements. Appropriate whistleblowing procedures, which are suitably reflected in staff training and staff behaviour policies, are in place for such concerns to be raised with the school's senior leadership team.

The person to whom an allegation is first reported should take the matter seriously and keep an open mind. S/he should not investigate or ask leading questions if seeking clarification; it is important not to make assumptions. Confidentiality should not be promised and the person should be advised that the concern will be shared on a 'need to know' basis only.

Actions to be taken include making an immediate written record of the allegation using the informant's words - including time, date and place where the alleged incident took place, brief details of what happened, what was said and who was present. This record should be signed, dated and immediately passed on to the Headteacher.

If the concerns are about the Headteacher, then the Chair of Governors should be contacted. The Chair of Governors of Kings Langley School is:

NAME: Frances Stickley      Contact Number: 01923 264504

In the absence of the Chair of Governors, the Vice Chair should be contacted.

The Vice Chair of Kings Langley School is:

NAME: Dawn Helfgott      Contact Number: 01923 264504

The recipient of an allegation must **not** unilaterally determine its validity, and failure to report it in accordance with procedures is a potential disciplinary matter.

The Headteacher/Chair of Governors will not investigate the allegation itself, or take written or detailed statements, but will assess whether it is necessary to refer the concern to the Local Authority Designated Officer (07920 283106/07795 288271/01992 556986):

Children's Services – 03001234043

SOOHS (Out of Hours Service-Children's Services) - 03001234043

In the event of allegations of abuse being made against the Head Teacher, where the Head Teacher is also the sole Proprietor of an independent school or where a staff member feels unable to raise an issue with their employer or feels that their genuine concerns are not being addressed, allegations should be reported directly to the Local Authority Designated Officer (LADO). Staff may consider discussing any concerns with the Designated Senior Person, if appropriate make any referral via them. (See Keeping Children Safe in Education: Part Four, DfE 2016, for further information).

If the allegation meets any of the three criteria set out at the start of this section, contact should always be made with the Local Authority Designated Officer without delay.

If it is decided that the allegation meets the threshold for safeguarding, this will take place in accordance with section 4.1 of the Hertfordshire Safeguarding Children Board Inter-agency Child Protection and Safeguarding Children Procedures.

If it is decided that the allegation does not meet the threshold for safeguarding, it will be handed back to Kings Langley School for consideration via the school's internal procedures and Code of Conduct.

The Headteacher should, as soon as possible, **following briefing** from the Local Authority Designated Officer, inform the subject of the allegation.

For further information see:

HSCB Inter-agency Child Protection and Safeguarding Children Procedures (Electronic)

## Section 4.1 Managing Allegations Against Adults who work with Children and Young People

Where a staff member feels unable to raise an issue with their employer/through the whistleblowing procedure or feels that their genuine concerns are not being addressed, other whistleblowing channels may be open to them:

- Children's Services 0300 123 4043
- NSPCC whistleblowing helpline is available for staff who do not feel able to raise concerns regarding child protection failures internally. Staff can call: 0800 028 0285 – line is available from 8:00 AM to 8:00 PM, Monday to Friday and Email: [help@nspcc.org.uk](mailto:help@nspcc.org.uk)

### **Safer working practice**

To reduce the risk of allegations, all staff should be aware of safer working practice and should be familiar with the guidance contained in the staff handbook/school code of conduct/staff behaviour policy and Safer Recruitment Consortium document Guidance for safer working practice for those working with children and young people in education settings (September 2015) available at

[http://www.thegrid.org.uk/info/welfare/child\\_protection/allegations/safe.shtml](http://www.thegrid.org.uk/info/welfare/child_protection/allegations/safe.shtml)

The document seeks to ensure that the responsibilities of school leaders towards children and staff are discharged by raising awareness of illegal, unsafe, unprofessional and unwise behaviour. This includes guidelines for staff on positive behaviour management in line with the ban on corporal punishment (School Standards and Framework Act 1998). Please see Kings Langley School's behaviour management policy for more information.

## **APPENDIX 1 : KEEPING CHILDREN SAFE IN EDUCATION (DfE 2016)**

### **Part One: Information for all school and college staff**

#### **Annex A: Further information**

---

On publication of this Child Protection Policy (September 2016), the May 2016 version of the statutory guidance '**Keeping Children Safe in Education**' available online, has been denoted by DfE as 'for information only'. New guidance commenced on the 5<sup>th</sup> September 2016. The DfE have confirmed that this guidance will be updated annually thereafter.

The existing version of the statutory guidance mentions that there will be also be updates in respect to the definition of Child Sexual Exploitation and also regulations relating to Children Missing from Education.

The school has therefore decided to provide the hyperlink only to '**Keeping Children Safe in Education**' in this policy rather than the document in its entirety, due to likely frequent change in content.

It is **essential** that **all** staff have access to this online document and read **Part 1** and **Annex**, which provides further information on:

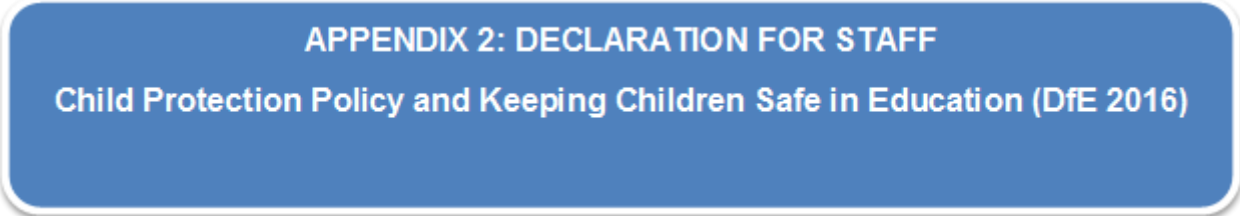
- children missing from education
- child sexual exploitation
- 'honour based' violence
- FGM mandatory reporting duty
- forced marriage
- preventing radicalisation

This is to assist staff in understanding and discharging their role and responsibilities as set out in this guidance.

We ask staff to sign to say they have read these sections (please see Appendix 2) and should subsequently be re-directed to these online documents again should any changes occur.

### **Link to Keeping Children Safe in Education:**

**<https://www.gov.uk/government/publications/keeping-children-safe-in-education--2>**



School/College name .....**Kings Langley School**.....

Academic Year .....**2016-2017**.....

Please sign and return to .....**Karen Jones**.....(Administrator)

by ..... Friday, 7th October 2016.....

I, \_\_\_\_\_ have read and am familiar with the contents of the following documents and understand my role and responsibilities as set out in these document(s):

1. Kings Langley's Child Protection Policy
2. **Part 1 and Annex A** of 'Keeping Children Safe in Education' DfE Guidance, 2016
3. Staff Code of Conduct and Whistleblowing Policy
4. E-Safety Policy

I am aware that the DSPs are:

- Helen Pocklington
- Jun Shaw
- Rosemary Inskipp
- Linda Patterson

and I able to discuss any concerns that I may have with them.

I know that further guidance, together with copies of the policies mentioned above, are available on the school website or from the DSP's.

Signed \_\_\_\_\_ Date \_\_\_\_\_

**APPENDIX 3: WHAT TO DO IF YOU ARE WORRIED A CHILD IS BEING  
ABUSED: ADVICE FOR PRACTITIONERS (DfE 2015)**



## Be alert

- Be aware of the signs of abuse and neglect
- Identify concerns early to prevent escalation.
- Know what systems the school have in place regarding support for safeguarding e.g. induction training , staff behaviour policy / code of conduct and the role of the Designated Safeguarding Lead ( DSP) .

## Question behaviours

- Talk and listen to the views of children, be non - judgemental.
- Observe any change in behaviours and question any unexplained marks / injuries
- To raise concerns about poor or unsafe practice , refer to the HT or principal, if the concerns is about the HT or Principal, report to Chair of Governors. Utilise whistleblowing procedure.

## Ask for help

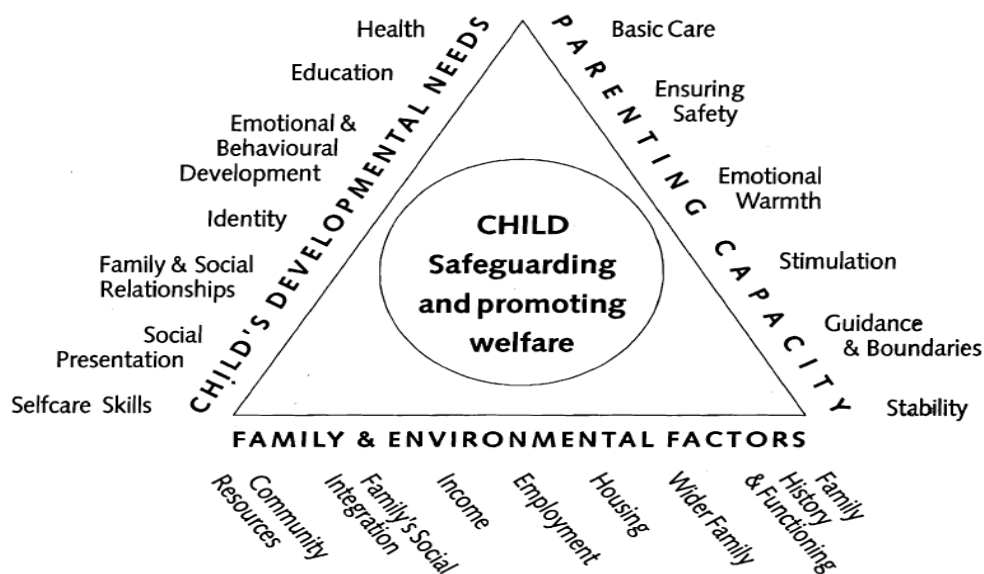
- Record and share information appropriately with regard to confidentiality
- If staff members have concerns, raise these with the school's or college's Designated Safeguarding Lead ( DSP)
- Responsibility to take appropriate action, do not delay.

## Refer

- DSP will make referrals to children services but in an emergency or a genuine concern that appropriate action has not been taken, staff members can speak directly to Children's Services on 03001234043 .

### APPENDIX 4: INDICATORS OF ABUSE AND NEGLECT

The framework for understanding children's needs:



**Working Together to Safeguard Children (DFE, 2015)**

<b>Physical abuse</b>	
<i>Physical abuse may involve hitting, shaking, throwing, poisoning, burning or scalding, drowning, suffocating or otherwise causing physical harm to a child.</i>	
<b>Child</b>	
Bruises – shape, grouping, site, repeat or multiple	Withdrawal from physical contact
Bite-marks – site and size Burns and Scalds – shape, definition, size, depth, scars	Aggression towards others, emotional and behaviour problems
Improbable, conflicting explanations for injuries or unexplained injuries	Frequently absent from school
Untreated injuries	Admission of punishment which appears excessive
Injuries on parts of body where accidental injury is unlikely	Fractures
Repeated or multiple injuries	Fabricated or induced illness -
<b>Parent</b>	<b>Family/environment</b>
Parent with injuries	History of mental health, alcohol or drug misuse or domestic violence.
Evasive or aggressive towards child or others	Past history in the family of childhood abuse, self-harm, somatising disorder or false allegations of physical or sexual assault
Explanation inconsistent with injury	Marginalised or isolated by the community.
Fear of medical help / parents not seeking medical help	Physical or sexual assault or a culture of

	physical chastisement.
Over chastisement of child	

<b>Emotional abuse</b>	
<i>Emotional abuse is the persistent emotional maltreatment of a child such as to cause severe and persistent adverse effects on the child's emotional development. It may involve conveying to children that they are worthless or unloved, not giving the child opportunities to express their views, 'making fun' of what they say or how they communicate - hearing the ill-treatment of another and serious bullying (including cyber bullying).</i>	
<b>Child</b>	
Self-harm	Over-reaction to mistakes / Inappropriate emotional responses
Chronic running away	Abnormal or indiscriminate attachment
Drug/solvent abuse	Low self-esteem
Compulsive stealing	Extremes of passivity or aggression
Makes a disclosure	Social isolation – withdrawn, a 'loner' Frozen watchfulness particularly pre school
Developmental delay	Depression
Neurotic behaviour (e.g. rocking, hair twisting, thumb sucking)	Desperate attention-seeking behaviour
<b>Parent</b>	<b>Family/environment</b>
Observed to be aggressive towards child or others	Marginalised or isolated by the community.
Intensely involved with their children, never allowing anyone else to undertake their child's care.	History of mental health, alcohol or drug misuse or domestic violence.
Previous domestic violence	History of unexplained death, illness or multiple surgery in parents and/or siblings of the family
History of abuse or mental health problems	Past history in the care of childhood abuse, self harm, somatising disorder or false allegations of physical or sexual assault
Mental health, drug or alcohol difficulties	Wider parenting difficulties
Cold and unresponsive to the child's emotional needs	Physical or sexual assault or a culture of physical chastisement.
Overly critical of the child	Lack of support from family or social network.

<b>Neglect</b>
----------------

<b><i>Neglect is the persistent failure to meet a child's basic physical and/or psychological needs, likely to result in the serious impairment of the child's health or development.</i></b>	
<b>Child</b>	
Failure to thrive - underweight, small stature	Low self-esteem
Dirty and unkempt condition	Inadequate social skills and poor socialisation
Inadequately clothed	Frequent lateness or non-attendance at school
Dry sparse hair	Abnormal voracious appetite at school or nursery
Untreated medical problems	Self-harming behaviour
Red/purple mottled skin, particularly on the hands and feet, seen in the winter due to cold	Constant tiredness
Swollen limbs with sores that are slow to heal, usually associated with cold injury	Disturbed peer relationships
<b>Parent</b>	<b>Family/environment</b>
Failure to meet the child's basic essential needs including health needs	Marginalised or isolated by the community.
Leaving a child alone	History of mental health, alcohol or drug misuse or domestic violence.
Failure to provide adequate caretakers	History of unexplained death, illness or multiple surgery in parents and/or siblings of the family
Keeping an unhygienic dangerous or hazardous home environment	Past history in the family of childhood abuse, self harm, somatising disorder or false allegations of physical or sexual assault
Unkempt presentation	Lack of opportunities for child to play and learn
Unable to meet child's emotional needs	Dangerous or hazardous home environment including failure to use home safety equipment; risk from animals
Mental health, alcohol or drug difficulties	

<b>Sexual abuse</b>
<b><i>Sexual abuse involves forcing or enticing a child or young person to take part in sexual activities, not necessarily involving a high level of violence, whether or not the child is aware of what is happening. The activities may involve physical contact or non-contact activities, such as involving children in looking at sexual images or being groomed on line / child exploitation.</i></b>
<b>Child</b>

Self-harm - eating disorders, self-mutilation and suicide attempts	Poor self-image, self-harm, self-hatred
Running away from home	Inappropriate sexualised conduct
Reluctant to undress for PE	Withdrawal, isolation or excessive worrying
Pregnancy	Sexual knowledge or behaviour inappropriate to age/stage of development, or that is unusually explicit
Inexplicable changes in behaviour, such as becoming aggressive or withdrawn	Poor attention / concentration (world of their own)
Pain, bleeding, bruising or itching in genital and /or anal area	Sudden changes in school work habits, become truant
Sexually exploited or indiscriminate choice of sexual partners	
<b>Parent</b>	<b>Family/environment</b>
History of sexual abuse	Marginalised or isolated by the community.
Excessively interested in the child.	History of mental health, alcohol or drug misuse or domestic violence.
Parent displays inappropriate behaviour towards the child or other children	History of unexplained death, illness or multiple surgery in parents and/or siblings of the family
Conviction for sexual offences	Past history in the care of childhood abuse, self harm, somatising disorder or false allegations of physical or sexual assault
Comments made by the parent/carer about the child.	Grooming behaviour
Lack of sexual boundaries	Physical or sexual assault or a culture of physical chastisement.

## APPENDIX 5 FOR SCHOOL PROSPECTUS

DfE guidance 'Keeping Children Safe in Education' (2016) highlights the school's role in protecting children from abuse. This is not a matter of choice, and including the following statement in school brochures or information documents for parents/carers may help to make that clear.

Information for Parents:

All parents need to understand that schools have a duty to safeguard and promote the welfare of children who are their students, that this responsibility necessitates a child protection policy and procedures, and that a school or institution may need to share information and work in partnership with other agencies when there are concerns about a Child's welfare."

"KINGS LANGLEY School has a Child Protection Policy and a copy of Hertfordshire Area Child Protection Procedures, both of which are available for parents/carers to see."

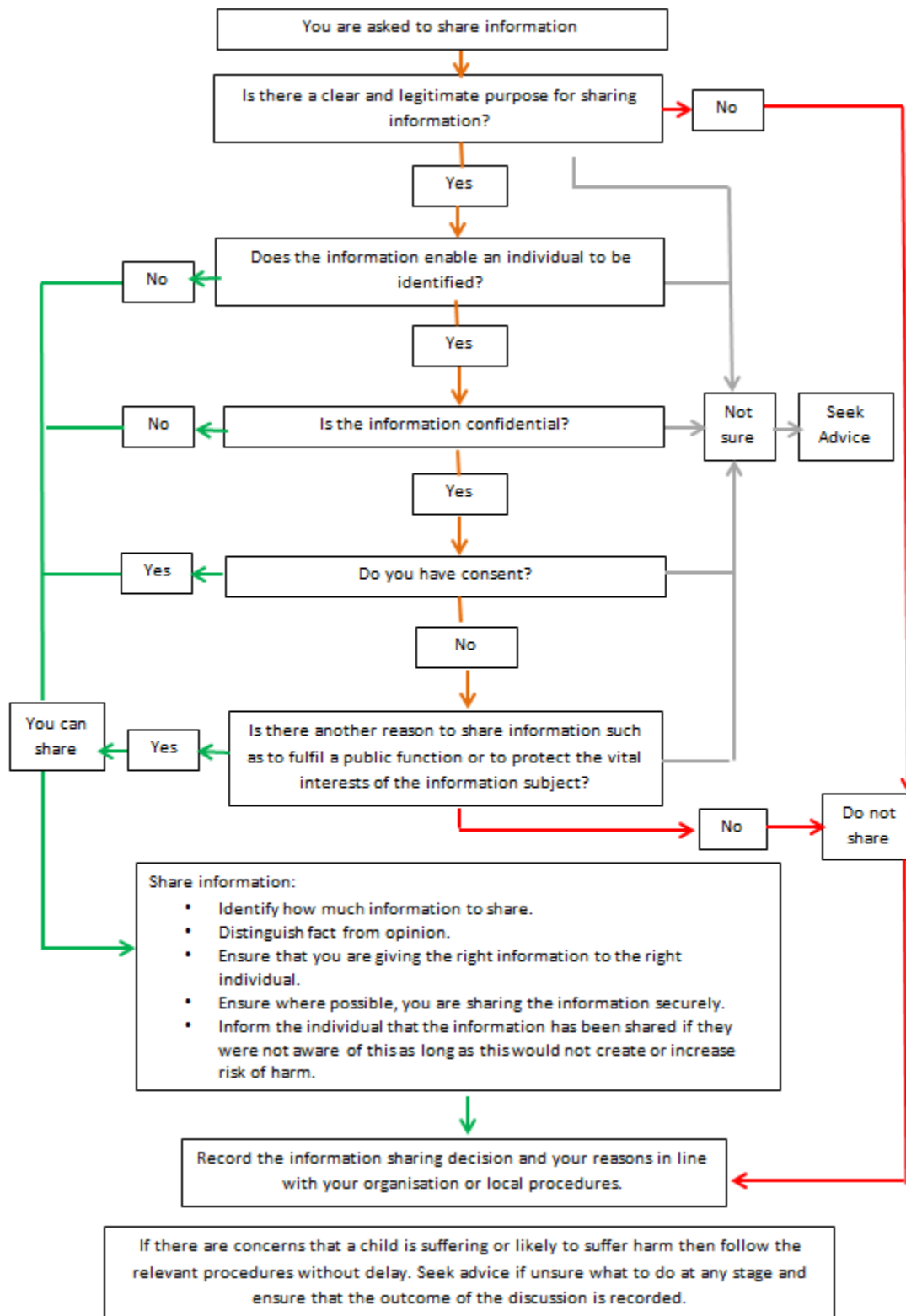
The Designated Senior Person for Child Protection will be happy to discuss any questions or concerns parents/carers may have about Child Protection Policies and Practice."

**APPENDIX 6** - Information sharing: Advice for practitioners providing safeguarding services to children, young people, parents and carers (DfE March 2015) Extracts.

## **The seven golden rules to sharing information**

1. Remember that the Data Protection Act 1998 and human rights law are not barriers to justified information sharing, but provide a framework to ensure that personal information about living individuals is shared appropriately.
2. Be open and honest with the individual (and/or their family where appropriate) from the outset about why, what, how and with whom information will, or could be shared, and seek their agreement, unless it is unsafe or inappropriate to do so.
3. Seek advice from other practitioners if you are in any doubt about sharing the information concerned, without disclosing the identity of the individual where possible.
4. Share with informed consent where appropriate and, where possible, respect the wishes of those who do not consent to share confidential information. You may still share information without consent if, in your judgement, there is good reason to do so, such as where safety may be at risk. You will need to base your judgement on the facts of the case. When you are sharing or requesting personal information from someone, be certain of the basis upon which you are doing so. Where you have consent, be mindful that an individual might not expect information to be shared.
5. Consider safety and well-being: Base your information sharing decisions on considerations of the safety and well-being of the individual and others who may be affected by their actions.
6. Necessary, proportionate, relevant, adequate, accurate, timely and secure: Ensure that the information you share is necessary for the purpose for which you are sharing it, is shared only with those individuals who need to have it, is accurate and up-to-date, is shared in a timely fashion, and is shared securely (see principles).
7. Keep a record of your decision and the reasons for it – whether it is to share information or not. If you decide to share, then record what you have shared, with whom and for what purpose.

## **Flowchart of when and how to share information**



**APPENDIX 7: ADDENDUM TO POLICY**



The following additional information should be read in conjunction with the section, 'Peer on peer Abuse' on pages 16 and 17.

**Staff should recognise that children are capable of abusing their peers and should not be tolerated or passed off as “banter” or “part of growing up”.**

**In order to minimise the risk of peer on peer abuse the school:**

- **Provides a developmentally appropriate PSHE curriculum which develops students understanding of acceptable behaviour and keeping themselves safe.**
- **Have systems in place for any student to raise concerns with staff, knowing that they will be listened to, believed and valued.**
- **Develop robust risk assessments where appropriate (e.g. Using the Risk Assessment Management Plan and Safety and Support Plan tools).**
- **Have relevant policies in place (e.g. behaviour policy).**